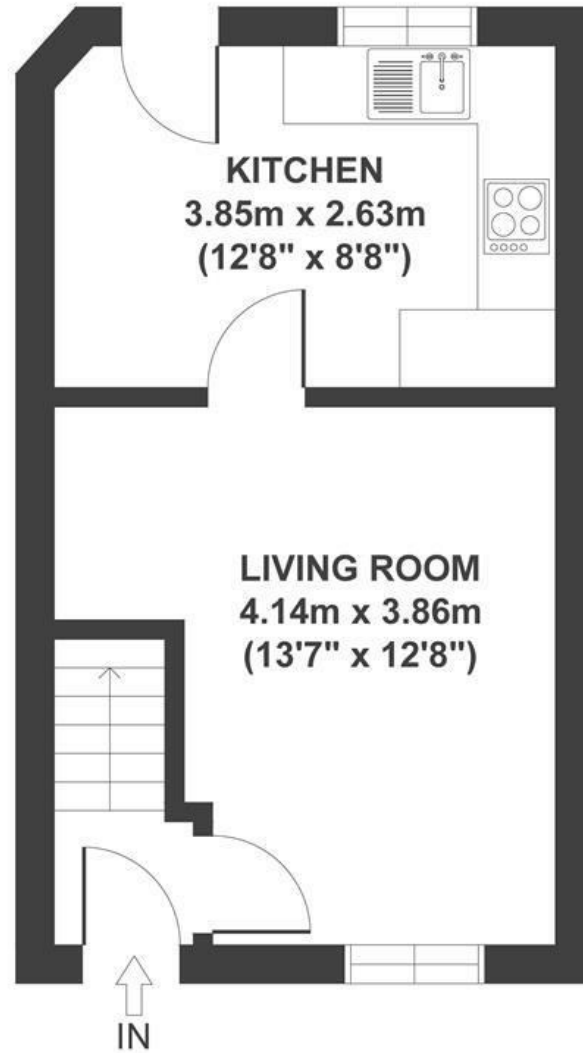


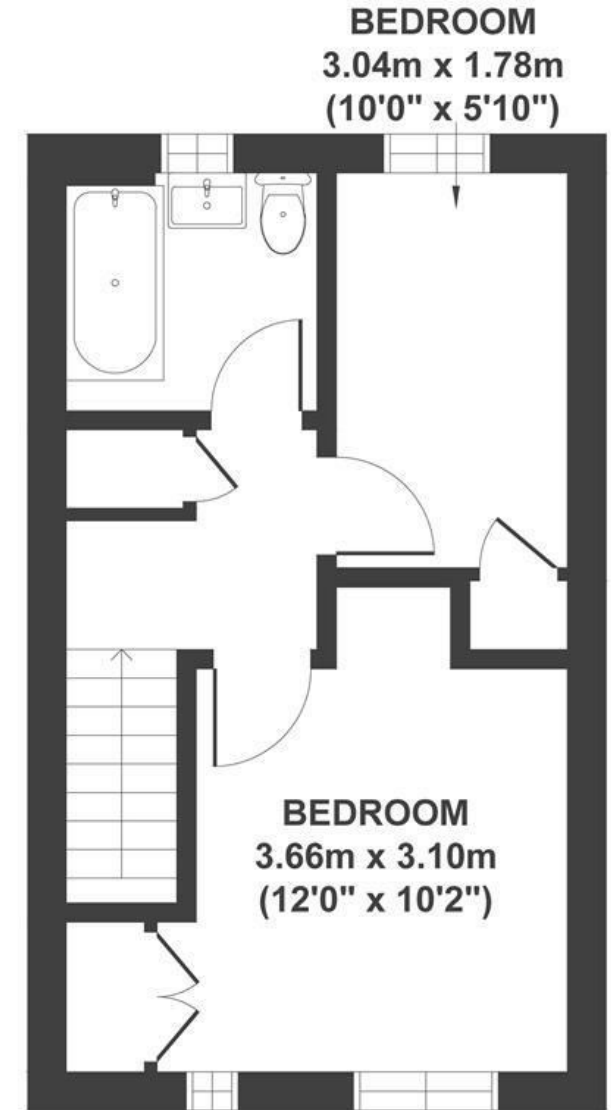
# Pinkers Mead

EMERSONS GREEN

APPROXIMATE FLOOR AREA  
54 SQM / 581 SQFT



GROUND FLOOR



FIRST FLOOR

**Boardwalk**

# Pinkers Mead

EMERSONS GREEN, BRISTOL

£

£280,000



BS16 7EJ

z z z

2 Bedrooms



1 Bathrooms

*"We've absolutely loved living here at Pinkers Mead for the last five years, we will miss both the house and the area. It's been perfect for our first home but we are now ready to upsize. The area is great for walks as it's very near the cycle path, the park and in walking distance of the Pomphrey Hill parkrun too! We are also in walking distance of Sainsbury's, Lidl, Boots, The Avenue Cafe, The Mill House Pub and Mangotsfield Primary School."*

